

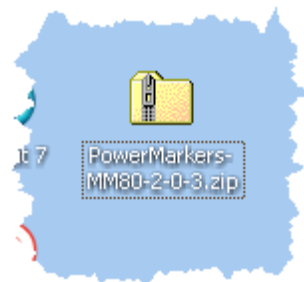


How to install Power Markers for MindManager

If you haven't installed a MindManager Add-in before, taking it one step at a time makes things easy.

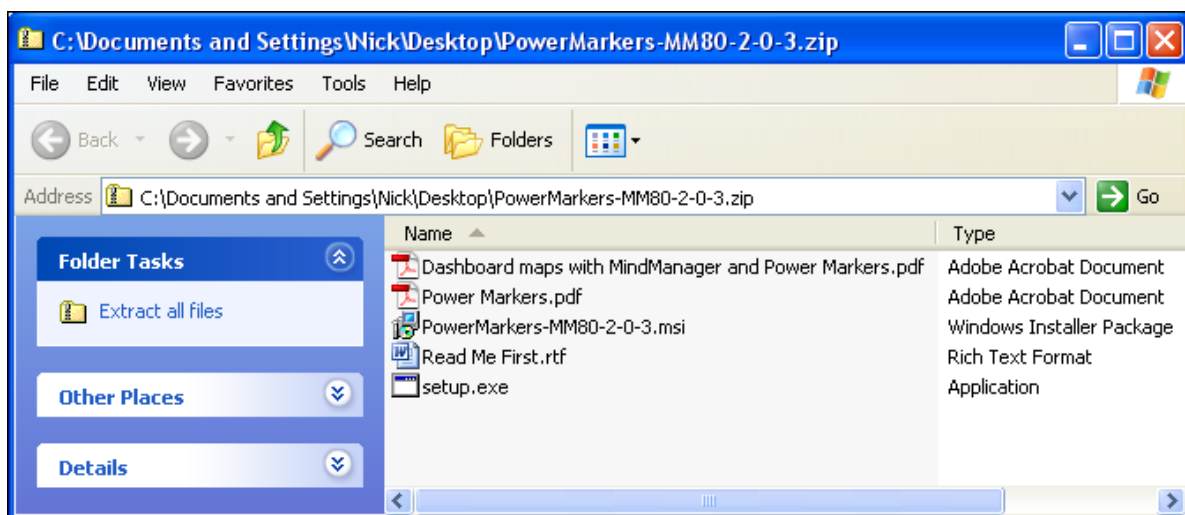
The screen shots below are from MindManager 8, but they are nearly the same for MindManager 7.

Begin by downloading the file. If your web browser asks you whether you want to save it or open it, choose **Save**. If you can choose where you save it, save it to your desktop.



The Power Markers download saved to your desktop

When downloading has finished, either click the **Open** button in the browser download dialogue, or find the downloaded file on your Windows desktop and double-click it. The downloaded file is a “zip archive”, which means that it contains more files inside it. Opening a zip archive will display a window like this:



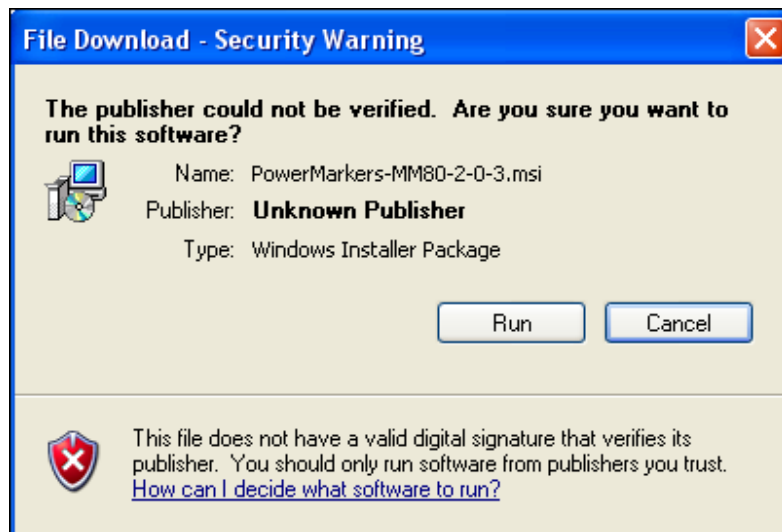
Displaying the contents of the downloaded zip file

The files in the zip archive are:

- **Dashboard maps with MindManager and Power Markers.pdf** – this is the white paper about designing dashboard maps, for you to print or read later. You can open it by double-clicking on it. You will need the Adobe Acrobat reader, available just about everywhere these days.
- **Power Markers.pdf** – this is the printable help file for Power Markers. If you decide that you want to print out the help file, then you can come back to the zip file for it later. It is not needed right now.
- **PowerMarkers-MM80-2-0-3.msi** – this is the Installer Package for Power Markers. The exact name of the file will vary, depending on which version of MindManager is it for, and which version of Power Markers software. If it contains **MM80** then it is for MindManager 8. If it contains **MM72** then it is for MindManager 7.2. The installer should be the right one for your version of MindManager.
- **Read Me First.rtf** – this file gives some extra information and will also be displayed during the installation. It can be opened with most word processing software, including WordPad, which is available on most Windows computers. You can refer back to this file later if you need to.
- **Setup.exe** – this is another way to install, if you do not have Windows Installer on your system. Most Windows systems do, so you can ignore this for now.

If MindManager is already running, save your maps and close it.

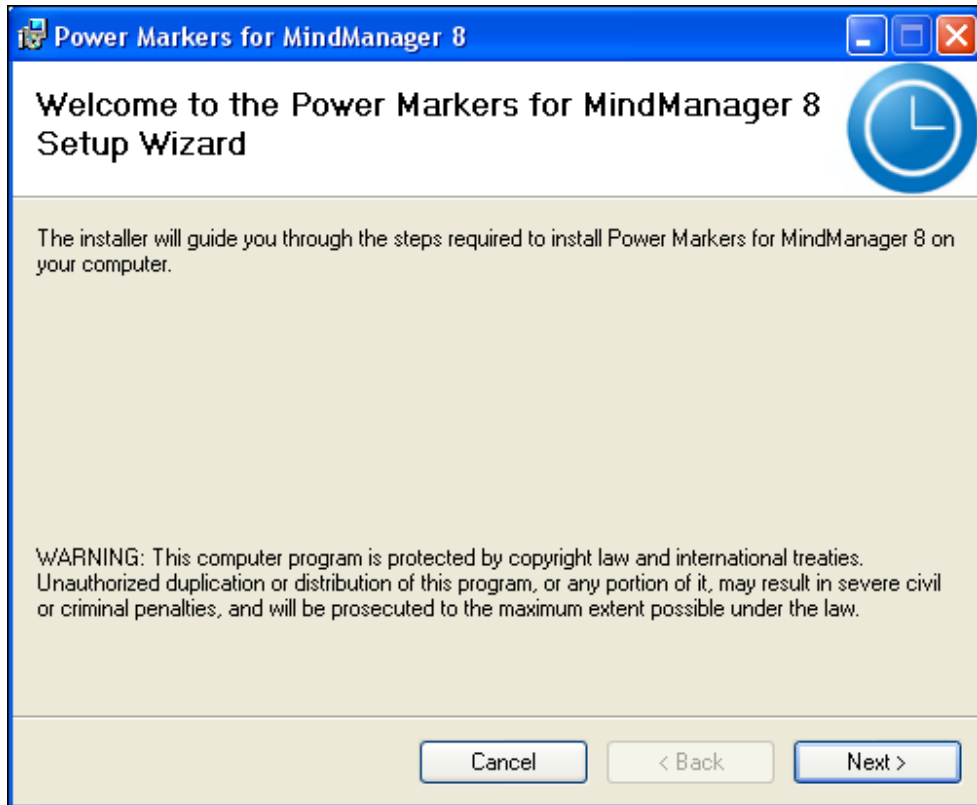
Then double-click on the file **PowerMarkers-MM80-2-0-3.msi** (or the equivalent file for your version of MindManager). On some Windows systems, you will get a security warning:



Security warning displayed by Windows

This warning is shown because (like most small developers) we have not paid a big fee for a certificate that proves we have paid a big fee for a certificate. On other versions of Windows, this warning may look different. Click **Run** to continue.

The installer will start up:



The Power Markers installer starting up

Double-check that the product (Power Markers for MindManager 8 in this example) corresponds to your version of MindManager, then click the **Next** button. If you have got a different version of MindManager, then go back to the web site and download the correct file. Installing Power Markers for the wrong version of MindManager will simply do nothing.

When you have finished the installation, the installer window closes. There is no standalone "Power Markers" programme added to the Start menu, nor any icon anywhere to click on. The only time that Power Markers runs is when you start MindManager.

Launch MindManager from your Start menu, Taskbar button or desktop icon. Now that Power Markers is installed, it will display a splash screen during the MindManager start-up process:



The Power Markers splash screen displayed when MindManager starts up

To get started, click the **Help** button to open the help file, then click **Continue**. The first tutorial in the Help file takes you through the built-in sample map, so that you can see Power Markers in action in just a couple of minutes.

If you need to **uninstall** Power Markers later, go back to the zip archive and double-click on the Windows Installer Package file again. As it is already installed, it will prompt you for permission to uninstall or repair it.

If you get stuck or seem to be having problems, send an email to powermarkers@olympic-limited.co.uk and we will do our best to help.